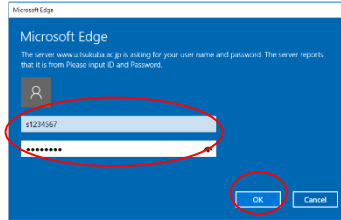
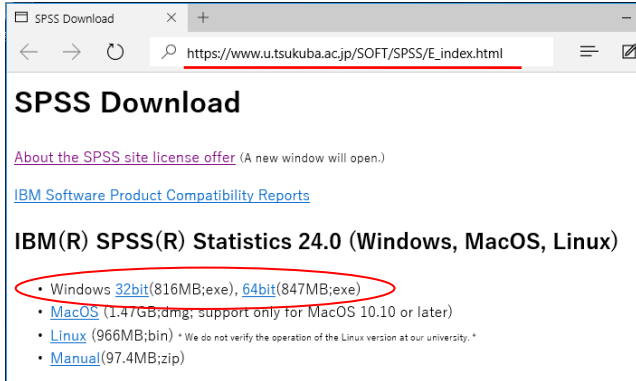


## SPSS Statistics 24.0 for Windows Site License SPSS installation instruction

### Download the file

0. Startup the web browser with PC connected to the university network, and type [https://www.u.tsukuba.ac.jp/SOFT/SPSS/E\\_index.html](https://www.u.tsukuba.ac.jp/SOFT/SPSS/E_index.html) in the address bar.

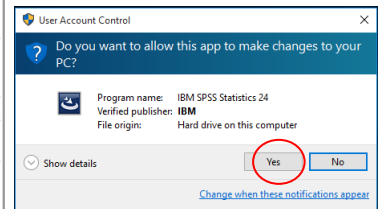
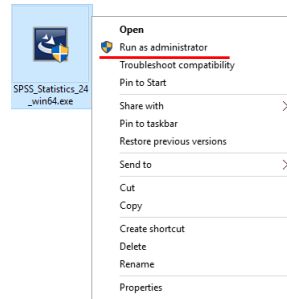
Click the kind (32bit or 64bit) of Operating System which suited PC to install.



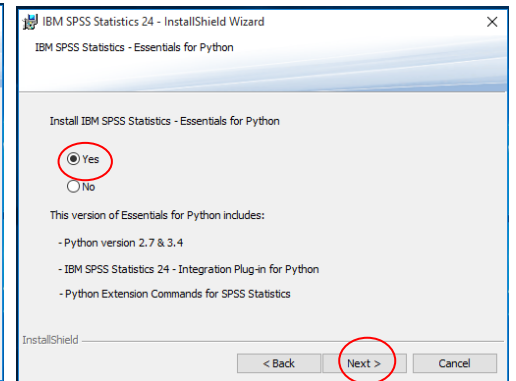
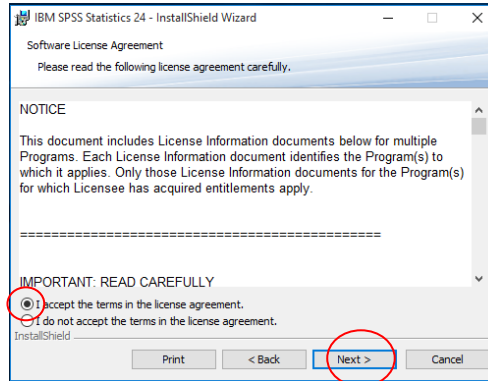
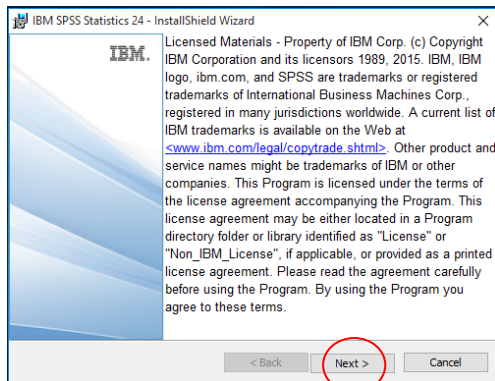
Type the user name[s+7 digits or familyname.firstname.zz] and password on the Zengaku Computing System, and click "OK".

### Installation

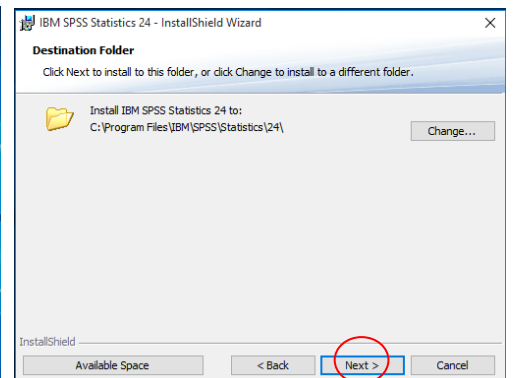
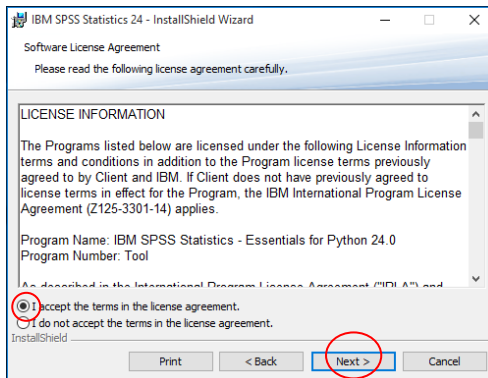
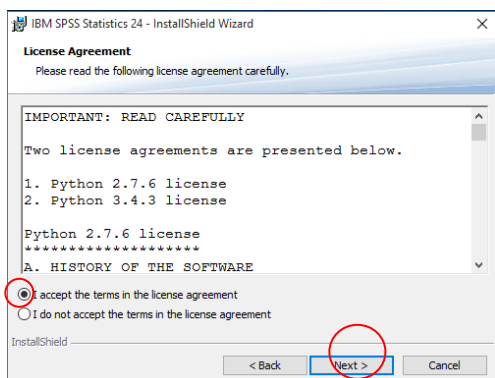
Right-click the downloaded *exe file* (SPSS\_Statistics\_24\_winXX.exe) and choose **Run as Administrator**. When a User Account Control dialog box appears, click "Yes".



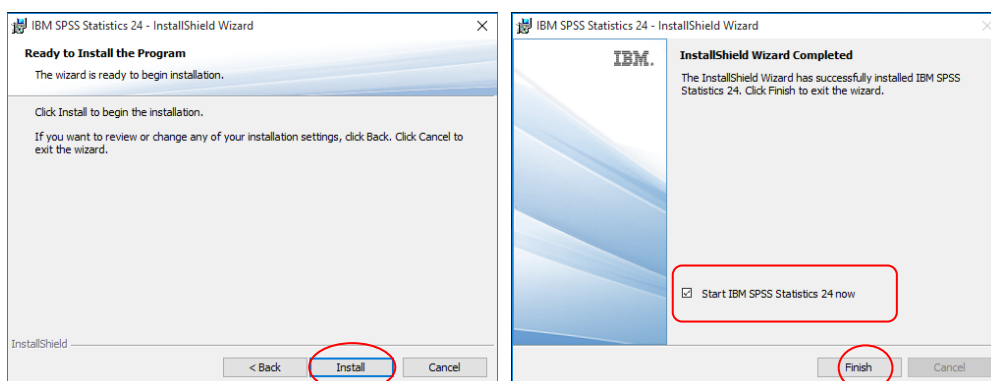
1. "Install Shield Wizard" appears. Click "Next".
2. "Software License Agreement (NOTICE)" appears. Choose "I accept the terms in the license agreement" and click "Next".
3. "Install Essentials for Python" appears. Choose "Yes" and click "Next".



4. "License Agreement (IMPORTANT:)" appears. Choose "I accept the terms in the license agreement" and click "Next".
5. "Software License Agreement (LICENSE INFORMATION)" appears. Choose "I accept the terms in the license agreement" and click "Next".
6. In the "Destination Folder" window, click "Next".

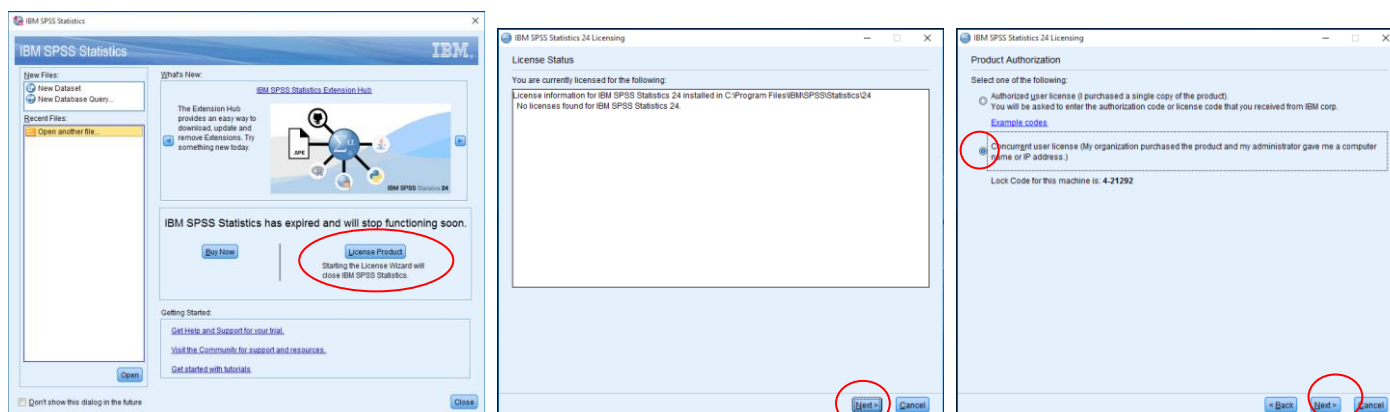


7. In the “Ready to Install the Program” window, click “Install”. Files install at this point. Wait a few minutes for the installation process to be completed.
8. “Installation completed” appears. Check the checkbox of “Start IBM SPSS Statistics 24 now” and click “Finish”.

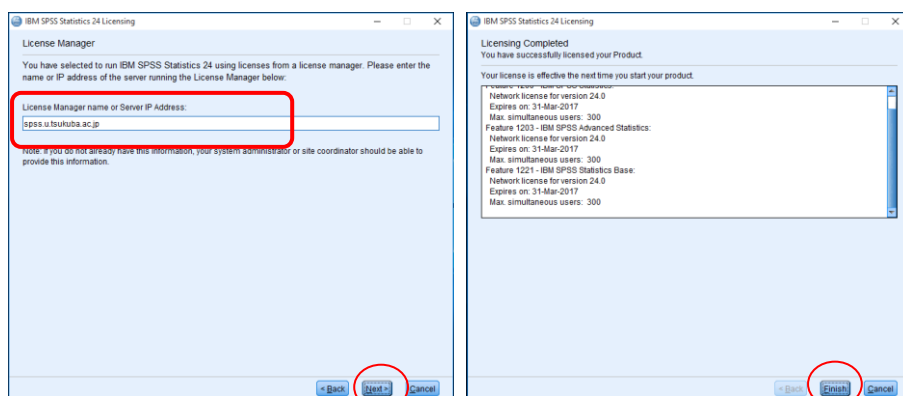


### Setting the license manager name

9. A file selection dialog appears. Click “License Product”.
10. “License Status” appears. Click “Next”.
11. “Product Authorization” appears. Choose “Concurrent user license” and click “Next”.



12. In the “License Manager” window, in the field of “License Manager name or Server IP Address”, type “spss.u.tsukuba.ac.jp” and click “Next”.
13. “Licensing Completed” appears. Click “Finish”.



Notes: During the installation, the user need not to be connected with the university network. However, for startup and using the SPSS software, the terminal must be connected with the license server (spss.u.tsukuba.ac.jp). When the user needs to use the software out of the university network, get connected with the university network through VPN connection service that the ACCC provides. The network of the student dormitory is no longer on the campus network since March 2017. Please use the VPN service just like connecting from outside the campus.

For more information, contact:  
Academic Computing and Communications Center  
E-mail: accc-software@cc.tsukuba.ac.jp

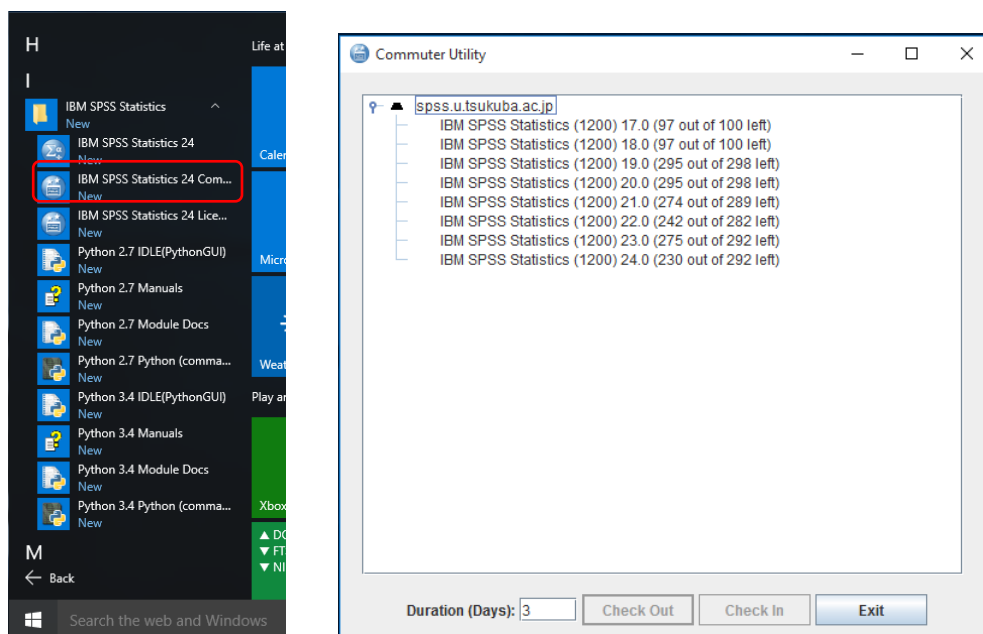
## SPSS Commuter License

For startup the SPSS software, the terminal must be connected with the university network. However, if you check out a commuter license, you can use the SPSS at the place which is not connectable with a network.

1. Choose Commuter License in the Windows Start menu program group for IBM SPSS Statistics.

2. “Commuter Utility” appears

Select the same as the version of SPSS currently used and click “Check Out”. The license has been successfully borrowed when you see a red check mark next to a license. When you see the red mark, click “Exit”. (The default setting of the term is 3 days, but you are able to borrow the license 1 to 7 days. In order to extend it to 7 days, type “7” instead of “3” in the field of Duration and click on “Check Out”.)



### <Notes>

The default duration of the license is limited up to 7 days. However, it is possible to extend it up to 30 days by changing the setup on the client PC. Even though it is set on the PC, the user still needs to change the Duration explicitly on Check Out.

1. Open *spssprod.inf* in the product installation directory  
[ex] Local Disk(C:) ►Program Files ►IBM ►SPSS ►Statistics ►24
2. Rewrite the value of "CommuterMaxLife" to 30
3. Close after saving a file

When unable to overwrite save, See [Property] - [Security] on *spssprod.inf*. You are rejected because it is not writeable by the user's name who is logging in to that PC. Put the user to [Writable].

```

[Language]
SPSSLanguage=en
[ProductRegistration]
URL=https://www-01.ibm.com/marketing/iwm/dre/signup?source=swg-ibmspr&S_PKG=ov36245
[Product]
LicenseDescription=
FixPack=0
CustomerName=admin
VersionPatch=0
Organization=
ProductName=IBM SPSS Statistics 24
ProductNickName=IBM SPSS Statistics
RegistryRoot=SPSS Statistics\24
CommonRoot=C:\Program Files\IBM\SPSS\Statistics\24\common
Version=24.0.0.0
VersionMajor=24
VersionMinor=0
StartJVMAtStartup=no
DaemonHost=spss.u.tsukuba.ac.jp
FeatureCode=1200
PreferencesRoot=Statistics
CodePage=65001
Copyright Copyright (c) IBM Corp. 1989, 2016.
CommuterMaxLife=30
  
```